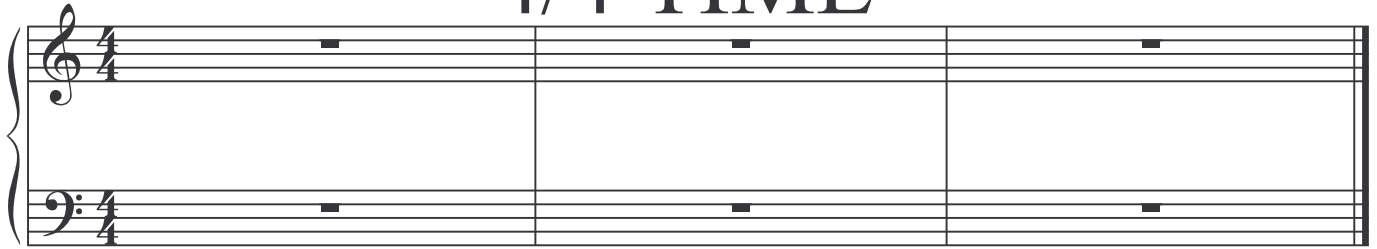


Time Signatures

4/4 TIME



The top number tells you how many beats are in a measure. The top number in 4/4 time is obviously the number 4. Therefore there are 4 beats per measure in 4/4 time. However, in 3/4 time there are only 3 beats per measure. In 2/4 time there are 2 beats per measure. In 6/8 time there are 6 beats per measure and so on. Again the top number tells you how many beats there are in one measure.

The bottom number tells you which note receives only ONE count. Here is a list of notes to consider. There are 16th notes, 8th notes, quarter notes, half notes, and whole notes. The number ONE represents WHOLE NOTES. If the bottom number were a ONE then whole notes would receive one count. A half note is represented by the number 2. If the bottom number were a 2, then all half notes would get only ONE count. Quarter notes are represented by the number 4. If the bottom number is a 4 then all quarter notes would get one count. Eighth notes are represented by the number 8. If the bottom number is an 8 then all eighth notes would get ONE count. Sixteenth notes are represented by the number 16. If the bottom number is 16, then all sixteenth notes would get ONLY ONE count.

Therefore, in 4/4 time, there are four beats per measure and quarter notes receive ONE count. Now, whatever note receives ONE count will effect all the other value notes accordingly.

WRITE IN THE 4/4 TIME SIGNATURE BELOW ON THIS STAFF.

