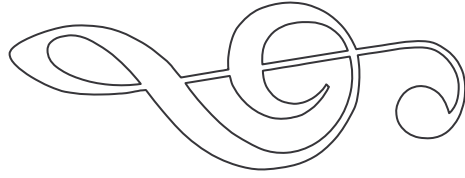


TREBLE CLEF

This is the treble clef. It is sometimes referred to as the it can be located on the bottom staff at times. The right hand will reach over and play the treble clef. In the the spaces on the various treble clefs below.



G clef. The treble clef is usually located on the top staff. However hand usually plays the treble clef. However, once in a while the left exercise below, take a crayon or a colored magic marker and fill in



Color Red



Color Green



Color Blue



Color Black



Color Yellow