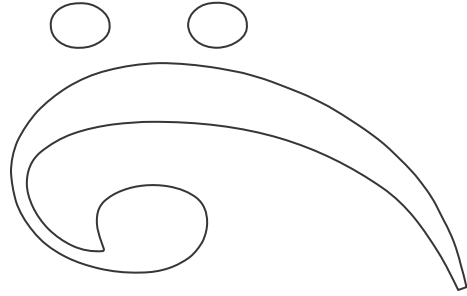
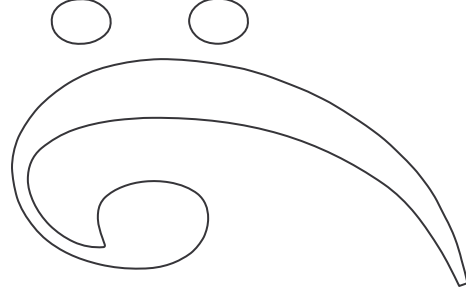


BASS CLEF

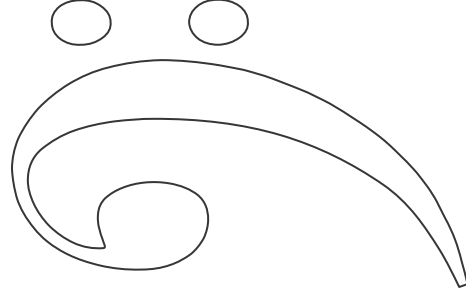
This is the bass clef. It is sometimes referred to as the F clef. However it can be located on the top staff at times. However, once in a while the right hand will reach over and play the bass clef. In the exercise below, take a crayon or a colored magic marker and fill in the spaces on the various bass clefs below.



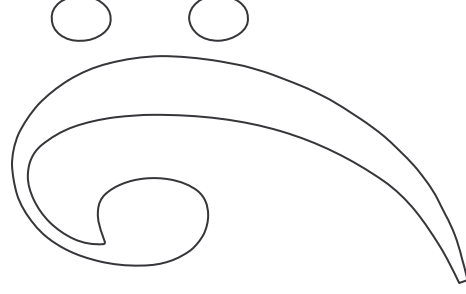
Color Red



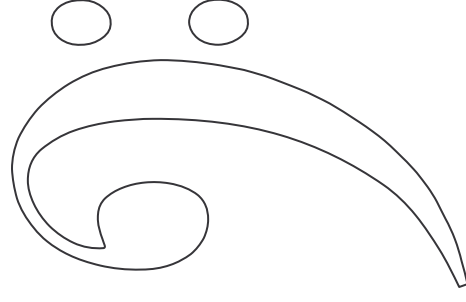
Color Green



Color Blue



Color Black



Color Yellow