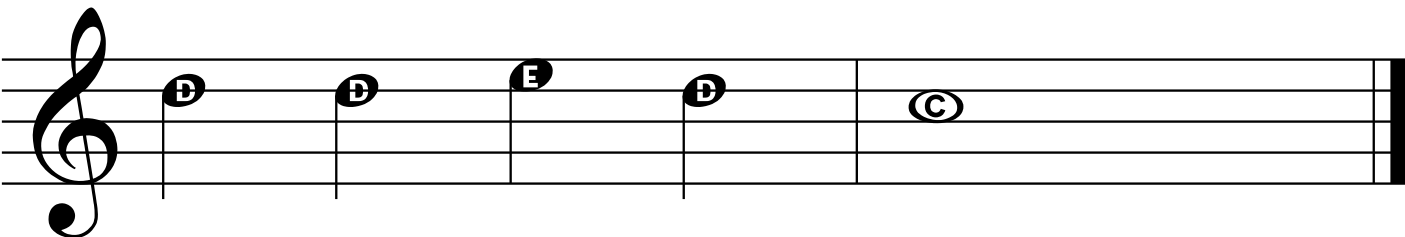
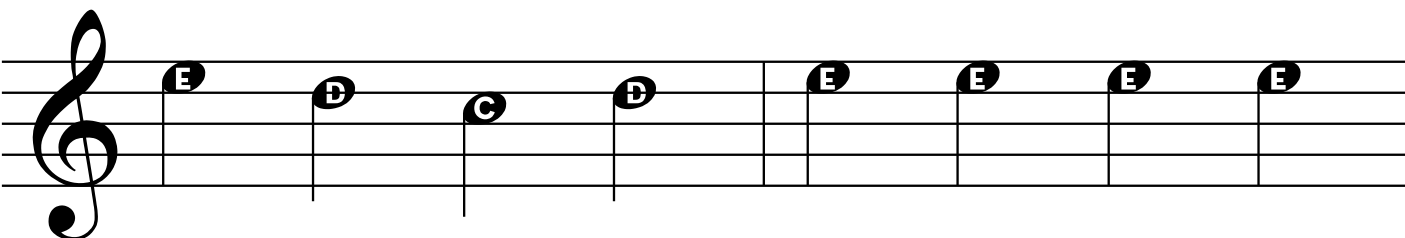
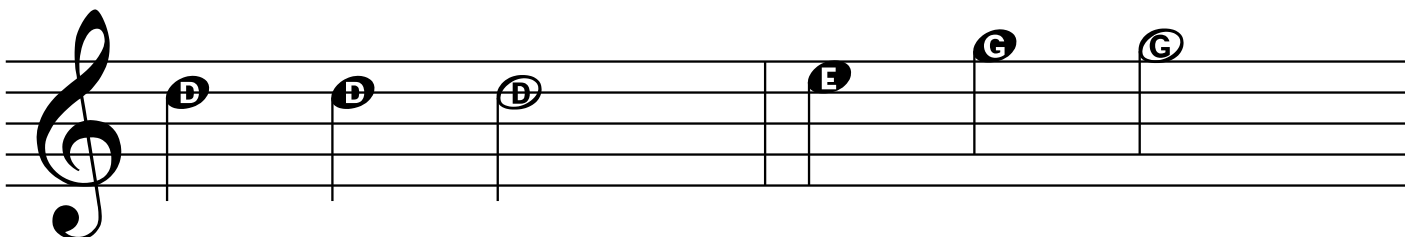
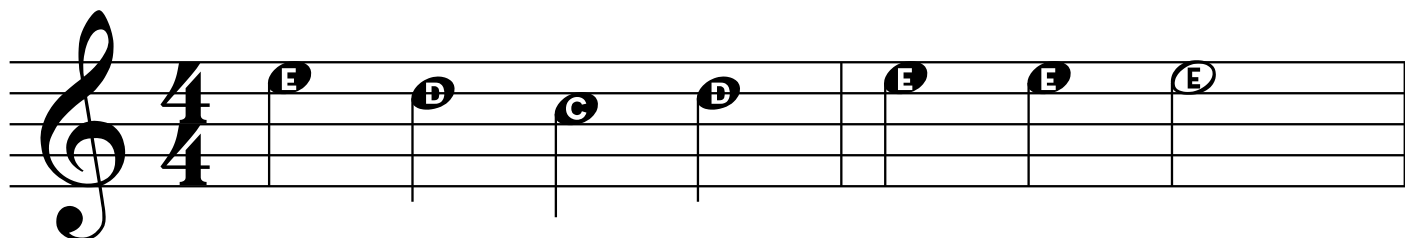


## Chord Substitution and Transition Chords

Chord Substitution Exercise. Below is the melody to "Mary Had A Little Lamb". It is a 2 chord song. Insert as many chords as you can from the chord charts at the end of the song over the melody line.



# Left Hand Chord Diagrams

Two musical staves in bass clef. The first staff shows a C Major chord with notes G, E, and C. The second staff shows a C# dim 7th chord with notes G, A, E, and C, with a sharp sign above the G and a double sharp sign above the A.

Diagram of a piano keyboard showing the notes C, E, and G highlighted with red dots. The label below is "C Major Chord".

Diagram of a piano keyboard showing the notes G, A, E, and C highlighted with red dots. The label below is "C# dim 7th Chord".

Two musical staves in bass clef. The first staff shows a Dm7 chord with notes G, A, F, and D. The second staff shows a D dim 7th chord with notes A, B, F, and D, with a flat sign above the A.

Diagram of a piano keyboard showing the notes G, A, F, and D highlighted with red dots. The label below is "Dm7 Chord".

Diagram of a piano keyboard showing the notes A, B, F, and D highlighted with red dots. The label below is "D dim 7th Chord".

Two musical staves in bass clef. The first staff shows a G7 chord with notes B, G, F, and D. The second staff shows a C6 chord with notes G, A, and E, with a sharp sign above the G.

Diagram of a piano keyboard showing the notes B, G, F, and D highlighted with red dots. The label below is "G7 Chord".

Diagram of a piano keyboard showing the notes G, A, and E highlighted with red dots. The label below is "C6 Chord".

Two musical staves in bass clef. The first staff shows an Eb dim 7th chord with notes G, A, and E, with a flat sign above the G. The second staff shows an E dim 7th chord with notes D, B, G, and E, with a flat sign above the D.

Diagram of a piano keyboard showing the notes G, A, and E highlighted with red dots. The label below is "Eb dim 7th Chord".

Diagram of a piano keyboard showing the notes D, B, G, and E highlighted with red dots. The label below is "E dim 7th Chord".

Two musical staves in bass clef. The left staff shows the F Major chord with notes C, A, and F circled. The right staff shows the F Minor chord with notes C, A-flat, and F circled.

F Major Chord

A piano keyboard diagram showing the F Major chord. Red dots are placed on the white keys of F, A, and C.

F Minor Chord

A piano keyboard diagram showing the F Minor chord. Red dots are placed on the white keys of F, A-flat, and C.

Two musical staves in bass clef. The left staff shows the C diminished 7th chord with notes G, A-flat, E, and C circled. The right staff shows the C Major 7th chord with notes B, G, E, and C circled.

C diminished 7th Chord

A piano keyboard diagram showing the C diminished 7th chord. Red dots are placed on the white keys of C, E-flat, G, and B-flat.

C Major 7th Chord

A piano keyboard diagram showing the C Major 7th chord. Red dots are placed on the white keys of C, E, G, and B.

Two musical staves in bass clef. The left staff shows the C7 (b 9th) chord with notes D, B-flat, G, E, and C circled. The right staff shows the A Minor chord with notes E, C, and A circled.

C7 (b 9th) Chord

A piano keyboard diagram showing the C7 (b 9th) chord. Red dots are placed on the white keys of C, E, G, B-flat, and D.

A Minor Chord

A piano keyboard diagram showing the A Minor chord. Red dots are placed on the white keys of A, C, and E.